

Magnus

MS13/MS24

Superior Optics for Enhanced Image
Flatness and Contrast

Ergonomic Design for Ease of Operation

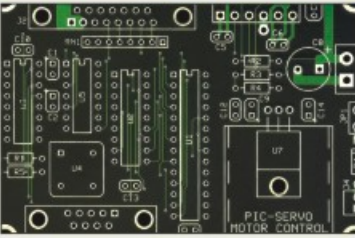
Long Working Distance of 105 mm

Parfocal Objectives

Smooth Magnification
Changeover between
1X/3X or 2X/4X



STEREO MICROSCOPES FOR BIOLOGICAL & INDUSTRIAL USE



Gems - Inspection Accessories
Darkfield attachment (with specimen holder) for inspection of
Gems & Micro samples under transmitted light



Micro Image Projection System

Specifications :

		MS 13		MS 24	
Microscope Body	Objective	1X/3X		2X/4X	
Eye Piece	Working Distance	105mm			
	Diopter Adjustment	+/- (left side)			
	High Eyepoint Super Widefield eyepiece SWH 10X with Field Number 23				
Field of View	Objective	1X	3X	2X	4X
	Visual field (mm)	23	7.7	11.5	5.7
Light Source	Reflected	6V 10W lamp with adjustable brightness			
	Transmitted	5W fluorescent lamp			
Optional Accessories		Fluorescent ring light			
		Eyepiece 15X and 20X			
		MIPS (Micro Image Projection System)			
		Gems inspection accessories			



Sales & Service Center:

The Science House
4/5 Civil Lines,
Agra - 282002, India

Tel: +91-562-2523036, 4064593
Cell: +91-96346-40888
www.BioZen.co.in
info@biozen.co.in



All standard sets are supplied as per specifications which are subject to change without any obligation on the part of the manufacturer. Optics are anti-fungus treated & with multi-layer coatings. Accessories shown may not be part of standard equipment.