

TL100

Gel Analysis Software
Nonlinear Dynamics, UK

The TL100 software from the TotalLab range enables the fast and consistent analysis of your 1D electrophoresis gel images with high levels of automation and accuracy. It has been developed specifically to guide the user through their analysis in a few clicks.

OFFERS WORKFLOWS TO SUIT YOUR ANALYSIS REQUIREMENTS

The automated and step-wise options in TL100 offer a choice of approaches. You can perform a complete analysis with a single click and then refine results afterwards, or step through the different analysis stages giving you complete control at each stage.

Automated - lane creation, band detection and background subtraction are all performed without any user intervention for the utmost in analysis consistency.

Step-wise - proceed through the analysis steps following the simple, wizard-driven guide to perform a successful analysis. Analysis parameters and lane templates can be saved and re-used for a consistent approach between experiments.

COPE WITH A WIDE RANGE OF 1D IMAGE TYPES

Highly developed algorithms accurately detect lanes and bands even on distorted gel images. Results can be verified using the range of visualisation tools which aid further examination of lane and band data. For optimisation of the automatic analysis, TL100 offers the tools to refine and perfect results.

DELIVERS ACCURATE CALIBRATION AND QUANTITATION

Molecular weight can be calculated for your bands from the standard marker lane you included on the gel. Classical commercial standards are available in the software or you can create and save your own. Molecular weight values can be propagated across your gel by Rf which takes into account any distortions in the image.

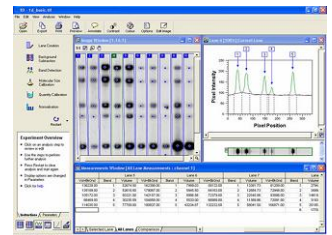
The TL100 software performs precise band edge detection and subtraction of background material which is vital for correct quantitation or normalisation of band material. There are additional tools to adjust band edges and account for band "grimacing" on awkward gels.

Quantity calibration allows calculation of band material from a calibration curve which is generated using known values. Alternatively, there are simple options for the calculation of normalised band volumes.

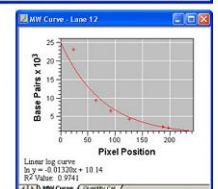
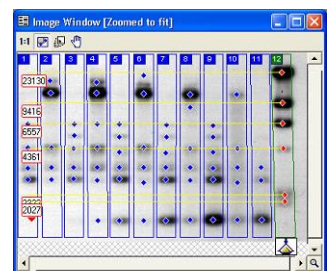
TL100 - ADDITIONAL MODULES

Also included with the TL100 software are modules for:

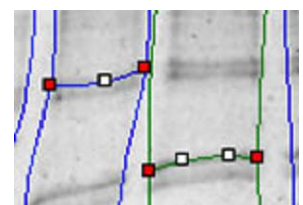
- * Array, dot / slot blot analysis
- * Colony counting
- * A toolbox for general image analysis



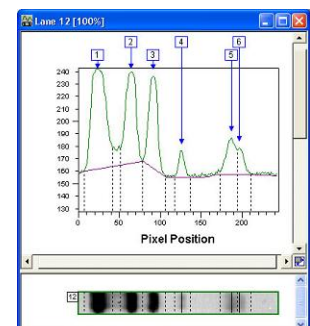
TL100 - designed and developed to allow an effortless analysis



Molecular weight calibration using TL100



Band "grimacing" tool for distorted gels



Precise background subtraction allows accurate quantitation of band material